



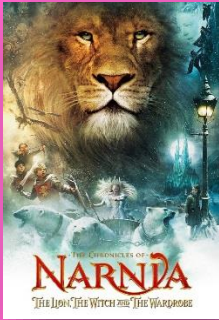
# Year 5

## Willow & Maple



Summer Term 2 Newsletter

### Literacy:



'The Lion, The Witch and The Wardrobe' - paper back & audio book.

We will be focusing on the following areas of study:

- Verbal & written discussion pieces
- Character personality & development
- Summarising text
- Investigating symbolism
- Script writing
- Drama

### Numeracy:

This half term studies will include:

- ❖ Identifying, describing and representing the position of a shape following a reflection or translation, using the appropriate language, and know that the shape has not changed.
- ❖ Identifying areas of study he/she has struggled with this year – recap & consolidate.



Ask your child to show you how to measure an acute, obtuse & reflex angle

### Topic:

How can I test forces in motion?

This half term we will be investigating aspects of forces that affect our Earth.



### RE, PSHE, Citizenship & Other Learning:

In PSHE this half term we will be developing a basic understanding of the following topics:

- Recognise how friendships change
- Understand relationships and technology
- Identify changes during puberty
- Develop ability to resolve conflict



1066 AD - Ask your child about the battles between Harald Hardrada, William Duke of Normandy, and Harold Godwinson!

### Other information:

- ✓ Go to our school website [www.parkfieldschool.org](http://www.parkfieldschool.org) to find out what's happening across the school.
- ✓ Sports Day – 19<sup>th</sup> June @ Kings Park
- ✓ End of year reports will be out later this half term!

### Things to Remember:



Nurture, Inspire, Enable